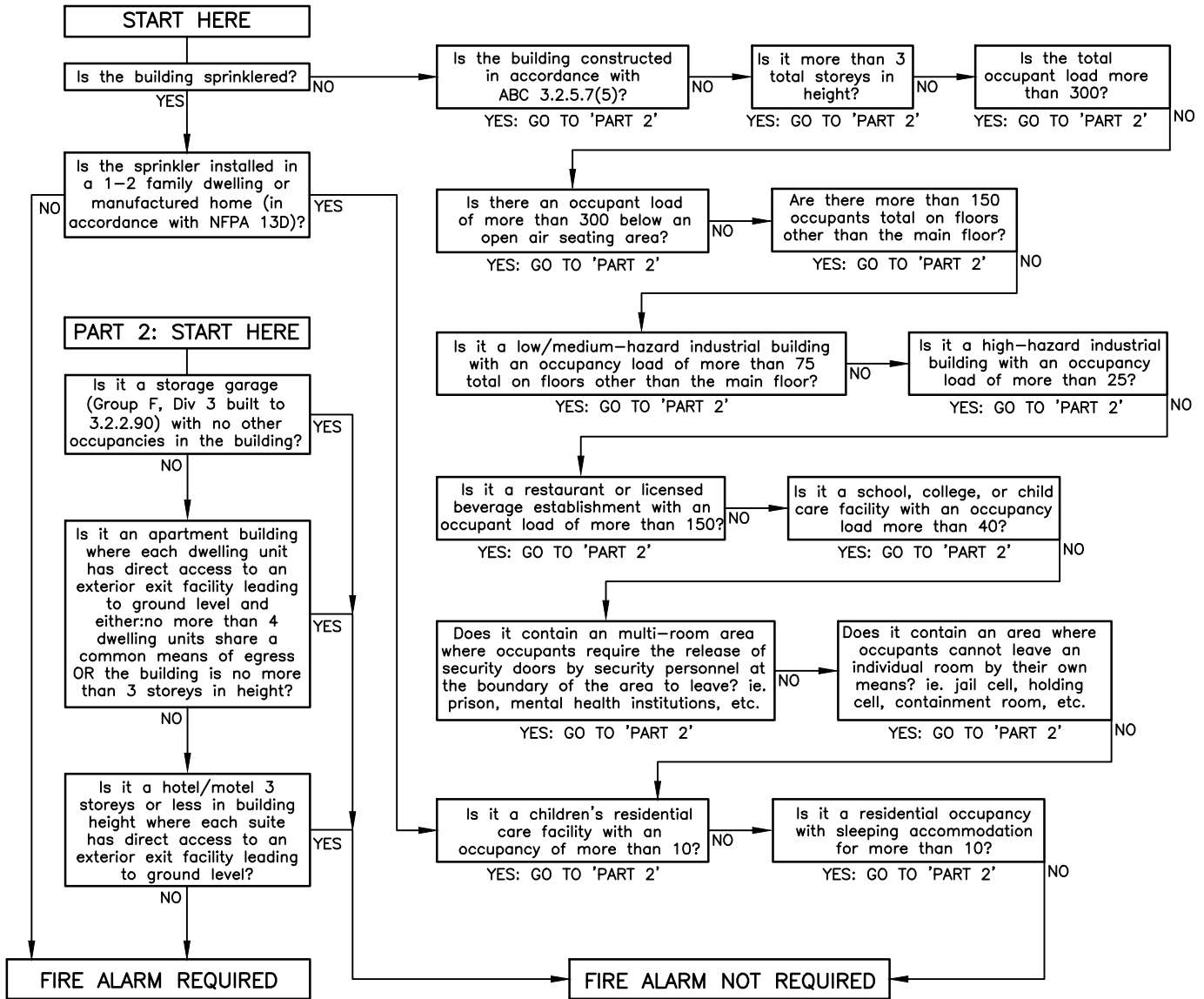


See ABC Table 3.1.17.1 for guidelines on anticipated occupant load.

### Does the building require a fire alarm system?

Flowchart derived from ABC (2014) 3.2.4.1



THIS FLOWCHART HAS BEEN PUBLISHED AS PUBLIC SERVICE. IT IS NOT INTENDED TO REPLACE PROFESSIONAL ENGINEERING ADVICE. REFER TO THE ALBERTA BUILDING CODE FOR FURTHER REQUIREMENTS, DETAILS, AND EXCEPTIONS. 908 ENGINEERING TAKES NO RESPONSIBILITY FOR THE CONTENT HEREIN.

REV.	DATE	DESCRIPTION
2	03 NOV 2017	UPDATED STANDATA REFERENCE TO ABC(2014)
1	09 OCT 2015	UPDATED ABC(2006) REFERENCES TO ABC(2014)
0	31 JULY 2014	ISSUED FOR PUBLIC USE

# 908 Engineering INCORPORATED

PO Box 20020 Red Deer, AB T4N 6X5  
Phone: 403.986.2939 Web: 908eng.com

PROJECT:

## FIRE ALARM SYSTEM REQUIREMENTS

FILE NO:

N/A

DWG NO:

# FA

1 OF 1

DRAWN: VRW

CHECKED: COB

DATE: 03 NOV 17

FIRE ALARM REQUIRED?